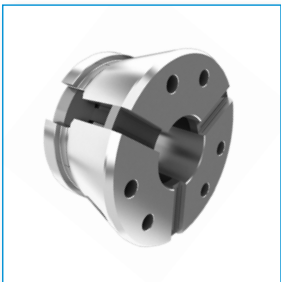


CLAMPING SYSTEMS



Respect for the craft

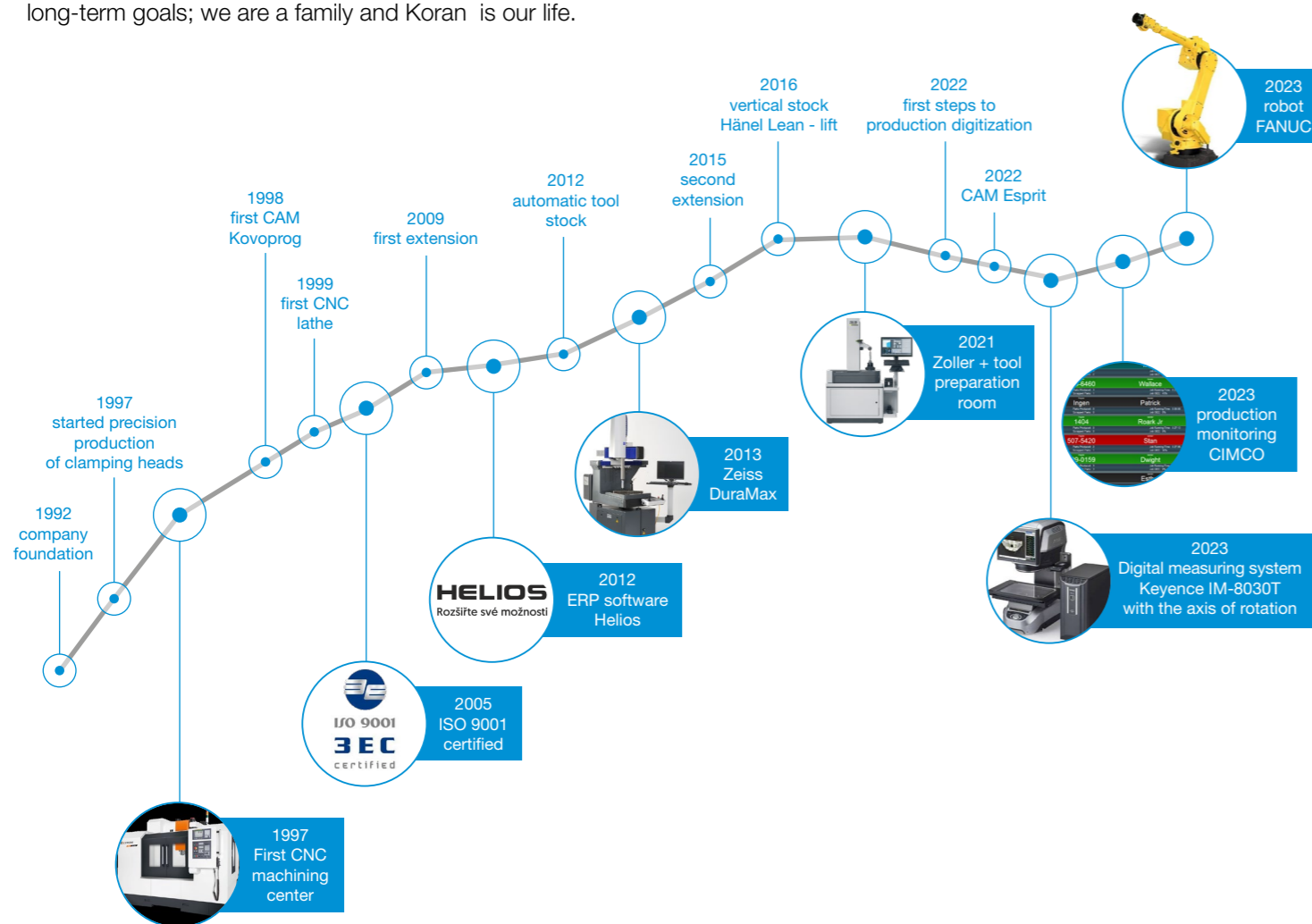
With a passion for detail

With enthusiasm for 4.0

KORAN, spol. s r. o.

Metalworking since 1992

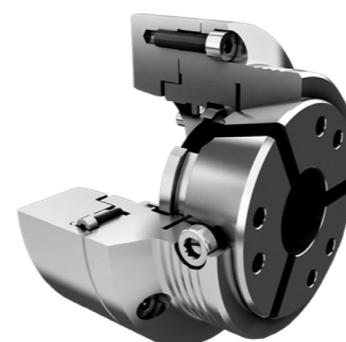
KORAN, spol. s r. o. is a family company. We are engaged in machining and our main production program is the production of collets, clamping heads and collet chucks, precision parts for single-purpose machines and parts for the electrical industry. We have been manufacturing clamping elements in Koran for more than 20 years. This is in-house know-how, which includes a stable team of experienced colleagues. We are constantly striving to improve and modernise our products and production processes. We have been ISO 9001 certified since 2005, which we see as a commitment to the continuous improvement of our processes and technology. We are working tirelessly to stabilize the company and we are currently intensively involved in the introduction of digital technologies. Although we already have robots in our work team, we honor and value our employees and we value all our customers. Above all, we feel our greatest advantage and strength lies in our long-term goals; we are a family and Koran is our life.



Products and technologies

KORAX

Clamping head chucks

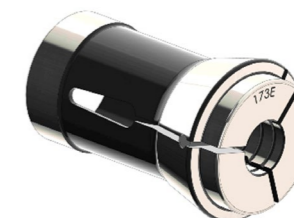


KORAFIX

Dead length collet chucks DIN6343



Dead length collets DIN 6343



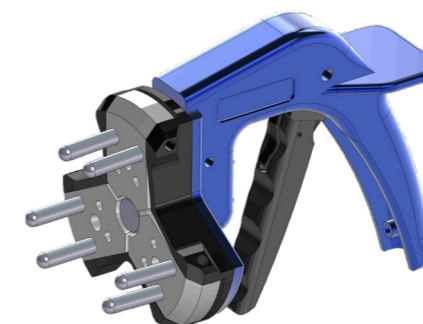
PVS

Unique pneumatic chuck for CNC machines

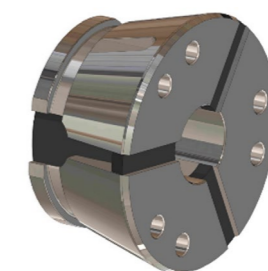


Changing device

for clamping heads



Clamping heads

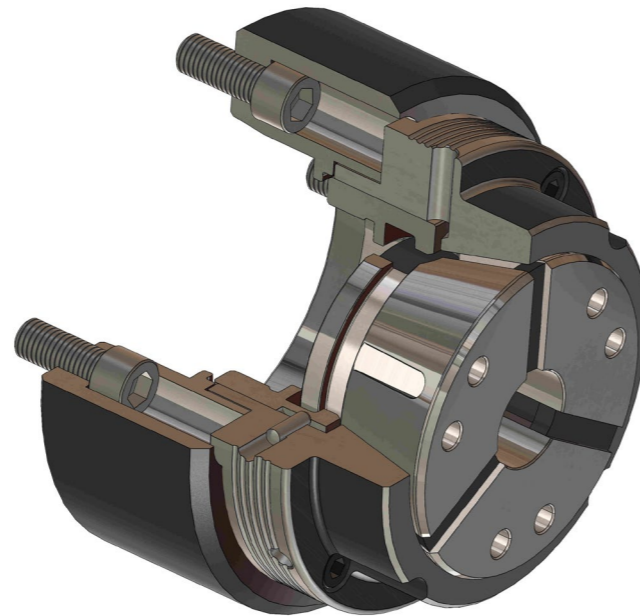
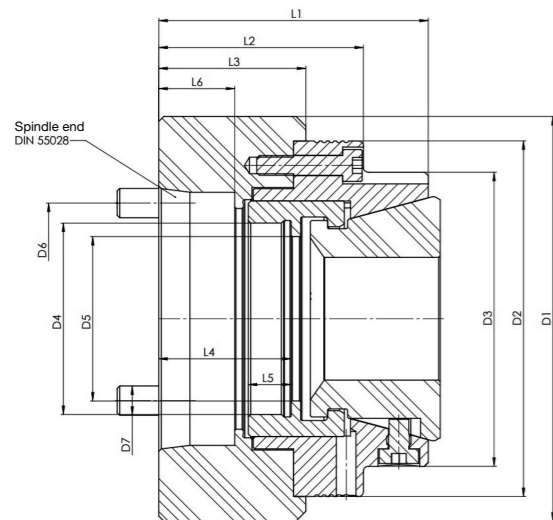


- Construction
- Milling
- Turning
- Hard turning
- Grinding

- Honning
- Chamfering
- Measuring
- Sandblasting
- Assembly

KORAX

Chuck for clamping heads



Type	Designation	Size	Spindle end	D1 (mm)	D2 (mm)	D3 (mm)	D4 (mm)	D5 (mm)	D6 (mm)	D7 (mm)	L1 (mm)	L2 (mm)	L3 (mm)	L4 (mm)	L5 (mm)	L6 (mm)	Max. RPM (min ⁻¹)
KORAX 42/5*	GT42/A2-5 CZ	42	A2-5	140	125	102	M66 x 1,5	43	104,8	M10 (4x90°)	90	68,5	45	39	17,5	16	5000
KORAX 42/6*	GT42/A2-6 CZ	42	A2-6	165	125	102	M66 x 1,5	43	133,4	M12 (4x90°)	90	68,5	45	39	17,5	16	5000
KORAX 52/5*	GT42/A2-5 CZ	52	A2-5	140	125	102	M66 x 1,5	53	104,8	M10 (4x90°)	96	68,5	45	41	17,5	16	5000
KORAX 52/6*	GT42/A2-6 CZ	52	A2-6	165	125	102	M66 x 1,5	53	133,4	M12 (4x90°)	96	68,5	45	41	17,5	16	5000
KORAX 65/5*	GT65/A2-5 CZ	65	A2-5	155	145	120	M78 x 1,5	67	104,8	M10 (4x90°)	95	68,5	45	39	17,5	19	4500
KORAX 65/6**	GT65/A2-6 CZ	65	A2-6	165	145	120	M78 x 1,5	67	133,4	M12 (4x90°)	95	68,5	45	39	17,5	16	4500
KORAX 65/8**	GT65/A2-8 CZ	65	A2-8	210	145	120	M78 x 1,5	67	171,4	M16 (4x90°)	100	73,5	48	42	17,5	19	4500

modification for cylindric taper $\phi 110$, $\phi 140$, $\phi 170$ – on quotation

* Possible modification with endstop

** Possible modification with endstop and different lengths

CHANGING DEVICE

for changing of clamping heads

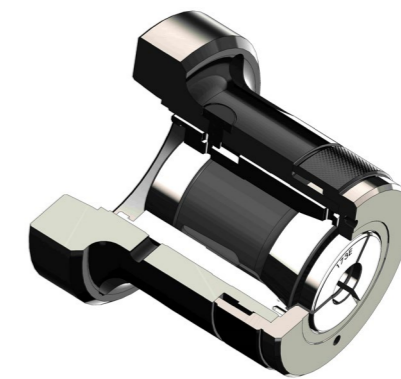
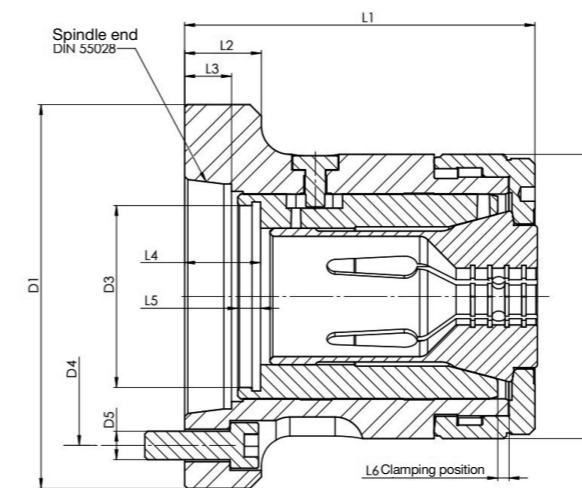


page 16 / Accessories

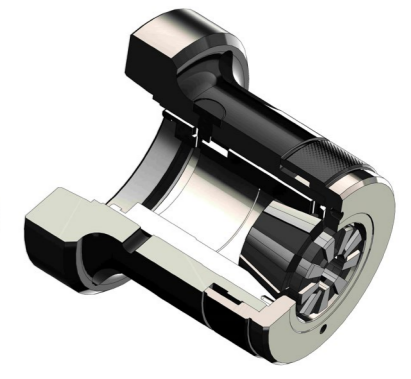
KORAFIX

Chuck for collets

Suitable for dead length collets DIN 6343 or Rubber-Flex collets



Use of collets
DIN 6343

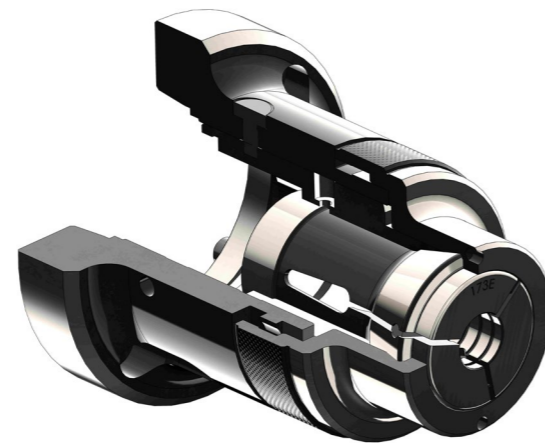
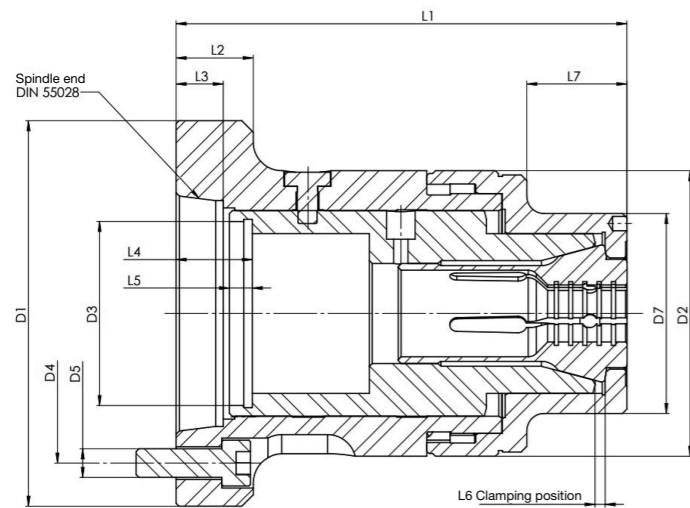


Use of collets
Rubber-Flex

Type	Size	Spindle end	RubberFlex Designation	Collet Type	D1 (mm)	D2 (mm)	D3 (mm)	D4 (mm)	D5 (mm)	L1 (mm)	L2 (mm)	L3 (mm)	L4 (mm)	L5 (mm)	L6 (mm)	Max. RPM (min ⁻¹)
KORAFIX 26/4	26	A2-4	RFC 20	161 E	112	85	M50x1,5	82,6	3xM10	103,4	30	13	21,7	8	2,5	6000
KORAFIX 26/100Z	26	Z100	RFC 20	161 E	112	85	M50x1,5	82,6	3xM10	103	30	6	16,4	8	2,5	6000
KORAFIX 30/4	30	A2-4	RFC 24	163 E	112	85	M50x1,5	82,6	3xM10	103,4	30	13	21,7	8	2,5	6000
KORAFIX 30/100Z	30	Z100	RFC 24	163 E	112	85	M50x1,5	82,6	3xM10	103	30	6	16,4	8	2,5	6000
KORAFIX 40/5	40	A2-5	RFC 36	173 E	135	100	M66x1,5	104,8	4xM10	123,5	27	16	27,4	8	2,5	6000
KORAFIX 40/5 LONG	40	A2-5	RFC 36	173 E	135	100	M66x1,5	104,8	4xM10	137,5	27	30	38	8	2,5	6000
KORAFIX 40/6	40	A2-6	RFC 36	173 E	170	100	M66x1,5	133,4	4xM12	123,5	34,4	17,5	28	8	2,5	6000
KORAFIX 40/140Z	40	Z140	RFC 36	173 E	155	100	M66x1,5	104,8	3xM10	107,5	23	6	12	8	2,5	6000
KORAFIX 52/6	52	A2-6	-	177 E	170	130	M90x1,5	133,4	4xM12	145	27	17,5	30,5	8	2,5	5000
KORAFIX 52/8	52	A2-8	-	177 E	235	130	M90x1,5	139,72	4xM16	146	37,5	20	31,5	8	2,5	4500
KORAFIX 60/6	60	A2-6	RFC 52	185 E	170	130	M90x1,5	133,4	4xM12	145	27	17,5	30,5	8	2,5	5000
KORAFIX 60/6 LONG	60	A2-6	RFC 52	185 E	170	130	M90x1,5	133,4	4xM12	155	27	27,5	40,5	8	2,5	5000
KORAFIX 60/170Z	60	Z170	RFC 52	185 E	185	130	M90x1,5	133,4	4xM12	133	30	6	18	8	2,5	5000
KORAFIX 60/8	60	A2-8	RFC 52	185 E	235	130	M90x1,5	139,72	4xM16	146	37,5	20	31,5	8	2,5	4500

KORAFIX LONG TAP

Long tap chuck for collets DIN 6343

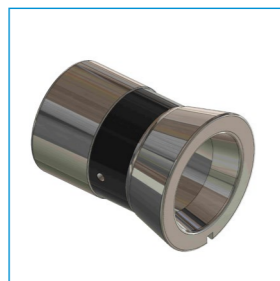


Type	Size	Spindle end	Collets RFC	D1 (mm)	D2 (mm)	D3 (mm)	D4 (mm)	D5 (mm)	D7 (mm)	L1 (mm)	L2 (mm)	L3 (mm)	L4 (mm)	L5 (mm)	L6 (mm)	L7 (mm)	Max. RPM (min ⁻¹)
KORAFIX 30/5 LONG TAP	30	A2-5	163E RFC 24	135	100	M66x1,5	104,8	4xM10	70	158	27	16	28	8	2,5	35	6000
KORAFIX 40/6 LONG TAP	40	A2-6	173E RFC 36	170	130	M90x1,5	133,4	4xM12	88	180	27	17,5	30,5	8	2,5	35	5000
KORAFIX 40/8 LONG TAP	40	A2-8	173E RFC 36	170	130	M90x1,5	133,4	4xM12	88	180	27	17,5	30,5	8	2,5	35	5000

Endstop
for collets DIN 6343



Reducing part
for collets DIN 6343



page 16 / Accessories

KORAFIX KOMBI

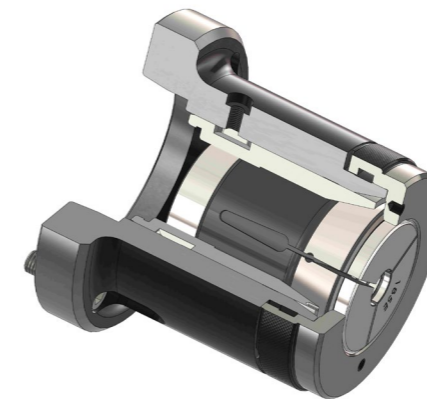
Use for both collets and clamping heads

Innovated chuck where both collet types are possible to use

NEW

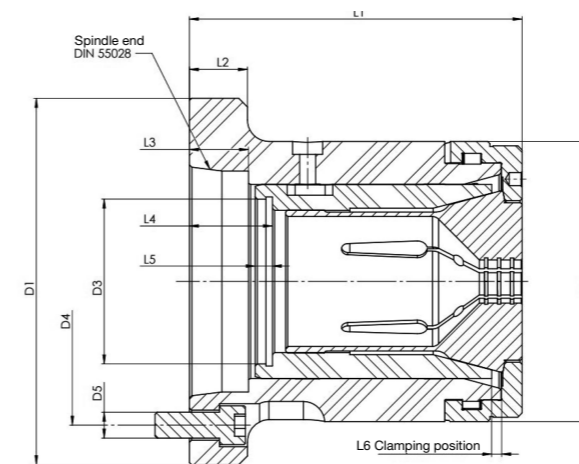
Collet DIN 6343 185E

(possible to use reducing part 185E/173E)



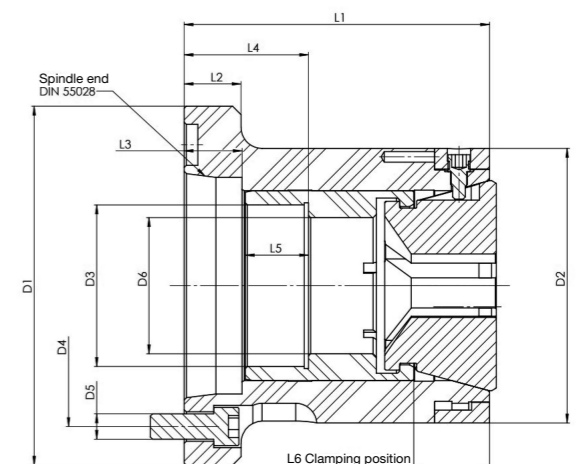
Clamping head

Clamping head T0065



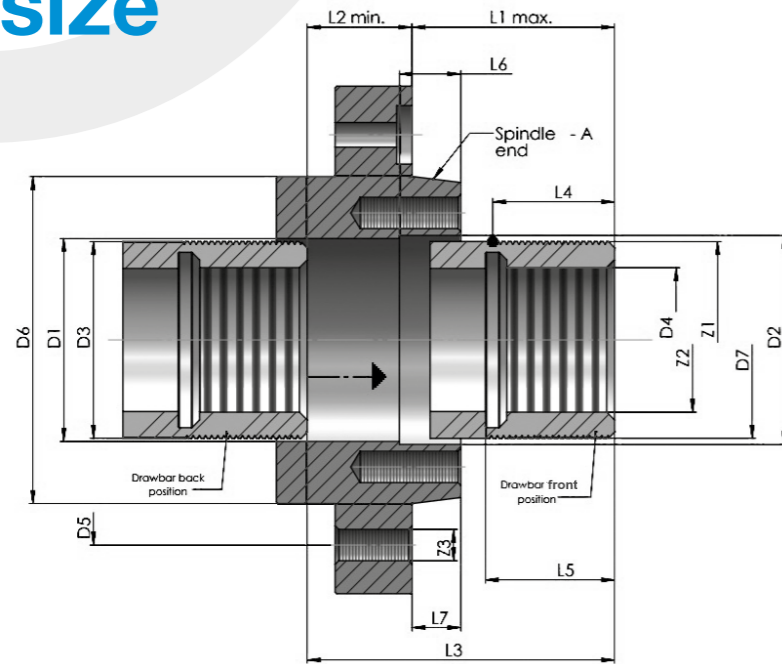
Position	Dimensions	Position	Dimensions
L ₁ mm	155	D ₁ mm	170
L ₂ mm	27,5	D ₂ mm	130
L ₃ mm	27	D ₃ mm	M78 x 1,5
L ₄ mm	40	D ₄ mm	133,4
L ₅ mm	8	D ₅ mm	4 x M12

modification A2-6 / ZYL170



Position	Dimensions	Position	Dimensions
L ₁ mm	145	D ₁ mm	170
L ₂ mm	27,5	D ₂ mm	130
L ₃ mm	27	D ₃ mm	M78 x 1,5
L ₄ mm	58	D ₄ mm	133,4
L ₅ mm	30	D ₅ mm	4 x M12
L ₆ mm	36	D ₆ mm	65

Spindle size



Spindle parameters		Dimensions
Spindle end	A	
Inside spindle diameter	D ₁	
Spindle mount part inner diameter	D ₂	
Outer diameter of draw bar	D ₃	
Inner diameter of draw bar	D ₄	
Spindle threads pitch circle	D ₅	
Central cone max outer diameter	D ₆	
Draw bar outer diameter	D ₇	
Max. position of draw bar	L ₁	
Min. position of draw bar	L ₂	
Total movement of draw bar	L ₃	
Draw bar outer thread length	L ₄	
Draw bar inner thread length	L ₅	
Spindle mount part length	L ₆	
Short taper length, if not standard	L ₇	
Draw bar outer thread	Z ₁	
Draw bar inner thread	Z ₂	
Spindle inner thread	Z ₃	

PVS

Pneumatic chuck

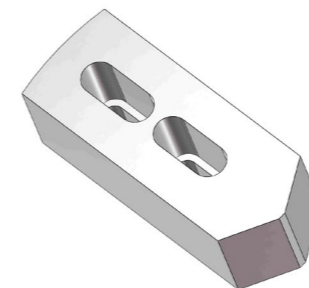
The specific feature of our pneumatic chucks is the patented self-locking mechanism, which is actuated by a short pulse of compressed air. This means that the chuck is not installed on a draw tube or clamping cylinder. The air supply is provided by an air gun which is held against the chuck valve and one pulse of air clamps the chuck, the next releases the jaws. The amount of clamping force can be controlled by adding a control valve to the pressured air supply. The higher the pressure, the higher the clamping force and of course the lower the air pressure, the lower the clamping force. Thanks to the possibility of regulating the size of the compressed air, even very thin parts can be clamped easily and without deformation. The chuck is also suitable for robot work, where the air inlet is located directly on the robot head and the supply is secured by a flexible inlet along the robot's moving arm. The pneumatic chuck is also suitable for 5-axis centres where complex air duct installations are not possible due to the complex movement during machining. These chucks are not through hole.

Technical parameters:	
Type	PVS 160 / PVS 110
Chuck size	ø 160 mm / ø 110 mm
Clamping base	ø 185 mm / ø 130 mm
Clamping base for machining centres	ø 225 mm / ø 160 mm
Modification	3 jaws / 3 jaws 2 jaws / 2 jaws
For revolving machines	max. 2000 RPM
Clamping step	2,3 mm
Control media	Preassured air 1 - 7 bar
Air regulation	Regulation valve 1 - 10 bar with lubrication
Clamping force	0,65 - 12 kN / 0,65 - 5 kN

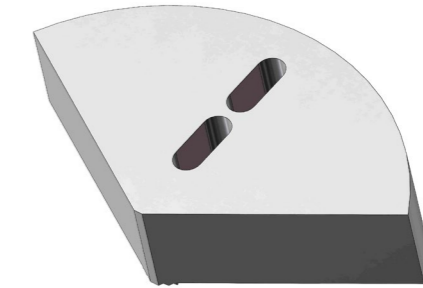


Jaws for PVS

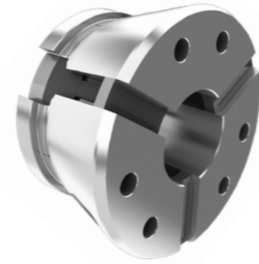
Standart modification
soft, hard



Segments modification
soft



Clamping heads

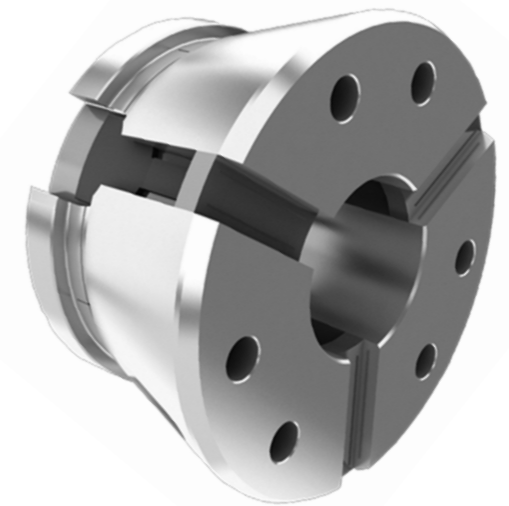
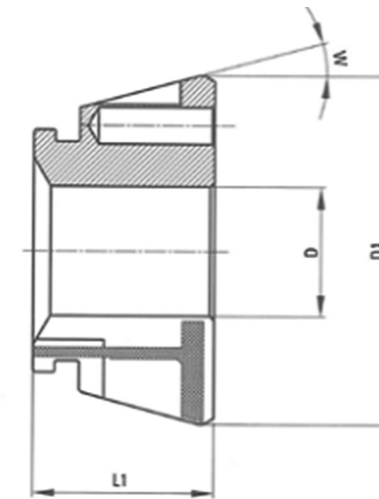


Size	Dimensions	Profile (°)	Designation	„D“ smooth mm	„D“ serrated mm	„D“ double serrated mm	Increments mm	
32	D1 = 57,7 L1 = 44,0 W = 12°	1	T0032R...G	4 – 32	-	-	1	
			T0032R...Q	-	8 – 10	-	1	
			T0032R...L	-	-	11 – 32	1	
		2	T0032V...G	7	-	-	1	
			T0032V...Q	-	8 – 22	-	1	
			T0032S...G	7	-	-	1	
42	D1 = 79,3 L1 = 42,0 W = 15°	1	T0042R...G	4 – 42	-	-	0,5	
			T0042R...Q	-	8 – 10	-	1	
			T0042R...L	-	-	11 – 42	1	
		2	T0042V...G	7	-	-	1	
			T0042V...Q	-	8 – 30	-	1	
			T0042S...G	7	-	-	1	
52	D1 = 79,2 L1 = 46,0 W = 15°	1	T0052R...G	6 – 52	-	-	0,5	
			T0052R...Q	-	8 – 11	-	1	
			T0052R...L	-	-	12 – 52	1	
		2	T0052V...G	-	8 – 36	-	1	
			T0052V...Q	-	33 – 46	-	1	
			T0052S...G	7	-	-	1	
65	D1 = 99,5 L1 = 53,0 W = 15°	1	T0065R...G	4 – 65	-	-	0,5	
			T0065R...Q	-	8 – 10	-	1	
			T0065R...L	-	-	11 – 65	1	
		2	T0065V...Q	-	8 – 46	-	1	
			3	T0065S...G	7	-	-	1
				T0065S...Q	-	8 – 56	-	1
80	D1 = 144,5 L1 = 53,0 W = 15°	1	T0080R...G	10 – 80	-	-	0,5	
			T0080R...Q	-	10	-	1	
			T0080R...L	-	-	11 – 80	1	
		2	T0080V...Q	-	10 – 56	-	1	
			3	T0080S...G	7	10 – 42	-	1
				T0080S...Q	-	43 – 68	-	1
100	D1 = 144,5 L1 = 59,0 W = 15°	1	T0100R...G	40 – 100	-	-	0,5	
			T0100R...Q	-	10	-	1	
			T0100R...L	-	-	40 – 100	1	
		2	T0100V...Q	-	50 – 70	-	1	
			3	T0100S...Q	-	50 – 86	-	1

*profile 1 = ● profile 2 = ◆ profile 3 = ▾

on quotation

Soft clamping heads (emergency)



Size	„D“ Round / smooth mm	Designation	D1 mm	L mm	W (°)
32	5, 10, 20	T0032WR...G	57,7	44	12
42	5, 15, 32	T0042WR...G	79,3	42	15
52	8, 15, 30	T0052WR...G	79,2	46	15
65	8, 20, 30, 42	T0065WR...G	99,5	53	15
80	8, 20, 40, 60	T0080WR...G	114,5	53	15
100	30, 45, 65, 90	T00100WR...G	144,5	59	15

Turning fixture for emergency clamping heads



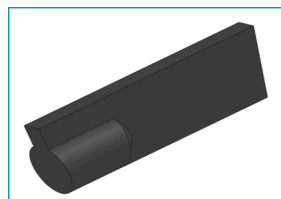
page 16 / Accessories

Dead length collets DIN 6343



Type		D ₁ (mm)	D ₂ (mm)	D ₃ (mm)	L (mm)	α	Round	Hexagonal	Square
140E	F22	22	21	30	55	15°	2 – 16	4 – 13	4 – 11
145E	F25	25	27	35	77	16°	2 – 20	4 – 17	4 – 14
148E	F28	28	28	38	70	15°	2 – 23	4 – 19	4 – 16
161E	F32	32	34	45	75	15°	2 – 27	4 – 22	4 – 19
163E	F35	35	38	48	80	15°	2 – 30	4 – 26	4 – 21
1536E	F76	37	40	47	92	16°	3 – 32	4 – 27	4 – 22
164E	F38	38,1	38	49	107,5	15°	3 – 33	4 – 28	4 – 23
171E	F42	42	42	55	94	15°	3 – 37	4 – 32	4 – 26
173E	F48	48	50	60	94	15°	3 – 42	4 – 36	4 – 29
177E	F58	58	60	70	94	15°	3 – 52	4 – 45	4 – 36
185E	F66	66	73	84	110	15°	3 – 60	4 – 52	4 – 42
193E	F90	90	92	107	130	15°	20 – 80	20 – 69	20 – 56

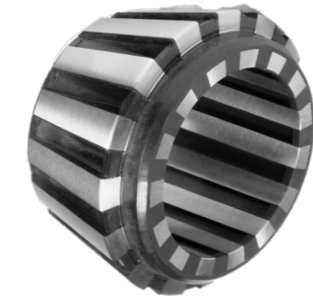
Sealing insert
For dead length collets DIN 6363



page 16 / Accessories

Rubber-Flex RFC

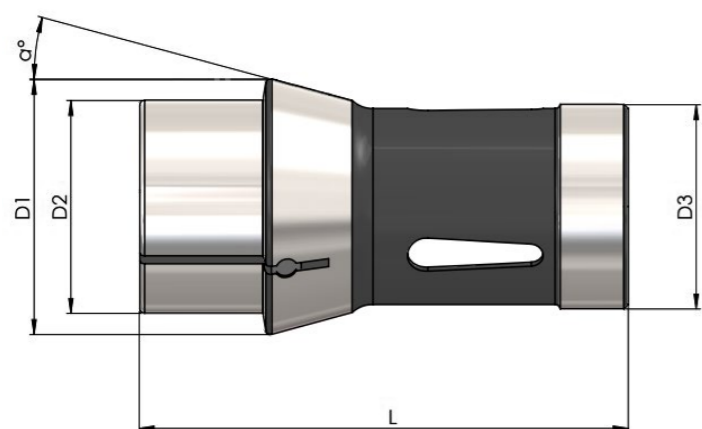
Rubber dead length collets



755 E / RFC 12		760 E / RFC 18		765 E / RFC 20		770 E / RFC 24		775 E / RFC 36		780 E / RFC 52	
140 E		148 E		161 E		163 E		173 E		185 E	
Clamping range mm	Designation RFC...	Clamping range mm	Designation RFC...	Clamping range mm	Designation RFC...	Clamping range mm	Designation RFC...	Clamping range mm	Designation RFC...	Clamping range mm	Designation RFC...
3 – 4	1204	3 – 5	1804	4 – 6	2006	6 – 8	2408	7 – 9	3608	19 – 21*	5220
5 – 6	1205	4 – 6	1806	6 – 8	2008	8 – 10	2410	9 – 11	3610	21 – 23*	5222
7 – 8	1206	6 – 8	1808	8 – 10	2010	10 – 12	2412	11 – 13*	3612	23 – 25*	5224
9 – 10	1207	8 – 10	1810	10 – 12	2012	12 – 14	2414	13 – 15*	3614	25 – 27*	5226
11 – 12	1208	10 – 12	1812	12 – 14	2014	14 – 16	2416	15 – 17*	3616	27 – 29*	5228
13 – 14	1209	12 – 14	1814	14 – 16	2016	16 – 18	2418	17 – 19*	3618	29 – 31*	5230
15 – 16	1210	14 – 16	1816	16 – 18	2018	18 – 20	2420	19 – 21*	3620	31 – 33*	5232
		16 – 18	1818	18 – 20	2020	20 – 22	2422	21 – 23*	3622	33 – 35*	5234
		18 – 20	1820	20 – 22	2022	22 – 24	2424	23 – 25*	3624	35 – 37*	5236
				22 – 24	2024	24 – 26	2426	25 – 27*	3626	37 – 39*	5238
				24 – 26	2026	26 – 28	2428	27 – 29*	3628	39 – 41*	5240
						28 – 30	2430	29 – 31*	3630	41 – 43*	5242
								31 – 33*	3632	43 – 45*	5244
								33 – 35*	3634	45 – 47*	5246
								35 – 37*	3636	47 – 49*	5248
								37 – 39*	3638	49 – 51*	5250
								39 – 41*	3640	51 – 53*	5252
								41 – 43*	3642	53 – 55*	5254
										55 – 57*	5256
										57 – 59*	5258
										59 – 61*	5260
										61 – 63	5262
										63 – 65	5264

*just for Full-Grip modification

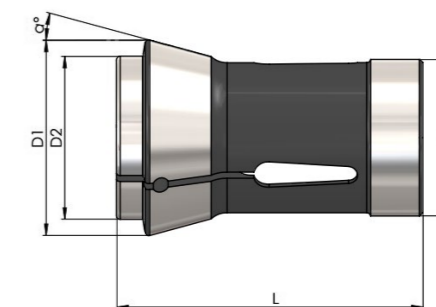
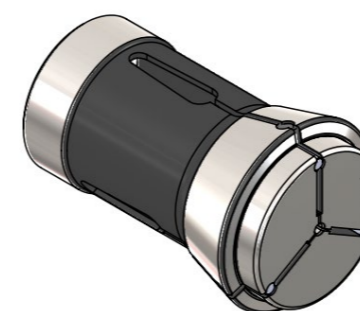
Long tap Dead length collets DIN 6343



Type		D ₁ (mm)	D ₂ (mm)	D ₃ (mm)	L (mm)	α	Round	Hexagonal	Square
161E long	F32	32	34	45	89	15°	2-27	4-22	4-19
1536E long	F76	37	40	47	107	16°	3-32	4-27	4-22
164E long	F38	38	38	49	129	15°	3-33	4-28	4-23
173E long	F48	48	50	60	115	15°	3-42	4-36	4-29

Dead length collets DIN 6343

Soft (emergency)

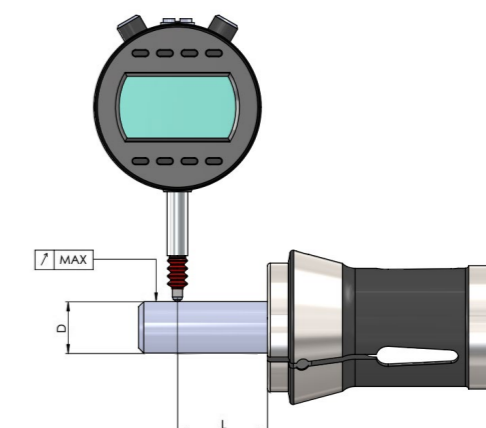


Type	L mm	D1 mm	D2 mm	D3 mm	α
173E soft	94	60	50	48	15°
185E soft	110	84	73	66	15°

Run-out accuracy

Dead length collets DIN 6343

Run-out accuracy of dead length collets DIN 6343		
D	L	●
3,0 - 6	16	0,02
6,0 - 10	25	0,02
10 - 18	40	0,03
18 - 24	50	0,03
24 - 30	60	0,03
30 - 50	80	0,04
over 50	100	0,04

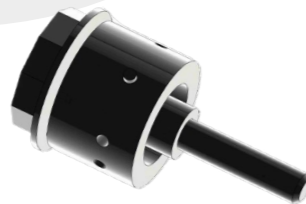


Accessories

Endstop

for dead length collets DIN 6343

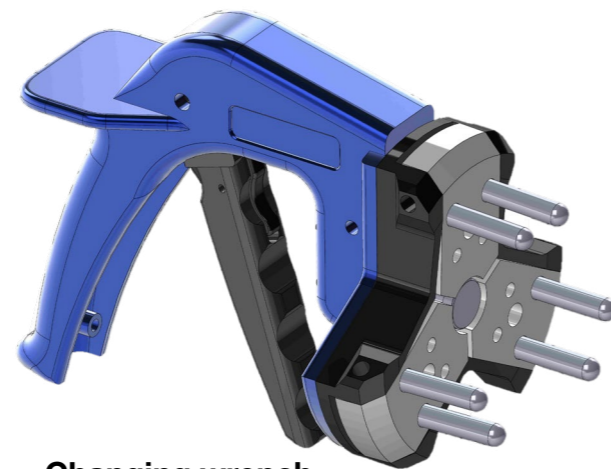
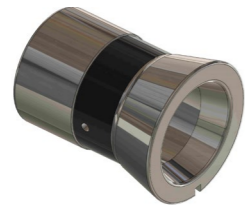
Designation	Endstop		
Clamping head size	173E	177E	185E



Reducing part

for dead length collets DIN 6343

Designation	Reducing part						
Clamping head type	173E/161E	173E/163E	173E/171E	185E/173E	185E/177E	193E/173E	193E/185E



Changing wrench

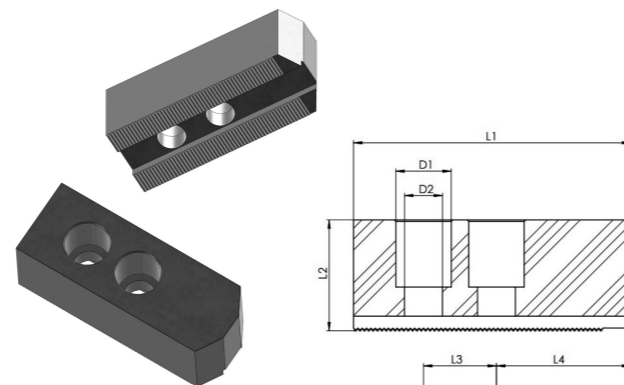
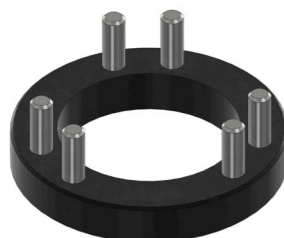
for clamping heads

Designation	Changing wrench for clamping heads				
Clamping head type	T0032	T0042	T0052	T0065	T0080

Turning fixture

For emergency clamping heads

Designation	Turning fixture				
Clamping head type	T0032	T0042	T0052	T0065	T0080



Soft / hard jaws

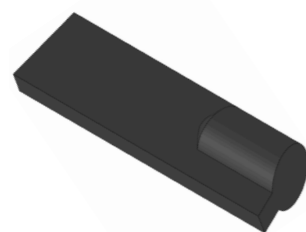
for chucks

Size	L1	L2	L3	L4	L5	D1	D2
6"	73	36	20	38	31	17	11
6"	73	55	20	38	31	17	11
8"	95	38	25	46	35	19	13
8"	95	55	25	46	35	19	13

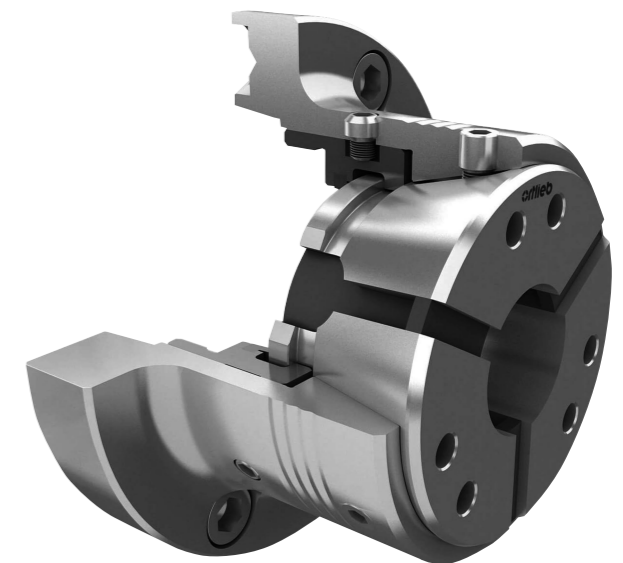
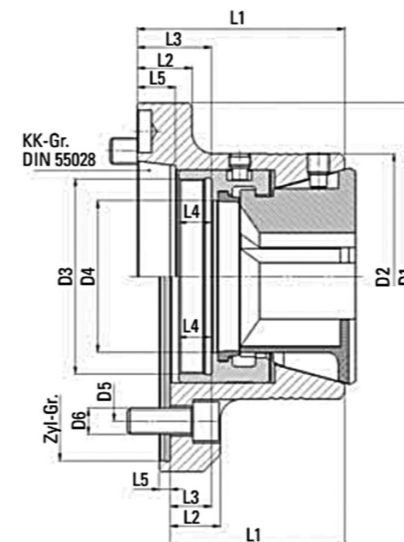
Sealing insert

for dead length collets DIN 6343

Designation	Collet type	
Sealing rubber for dead length collets	173E	185E

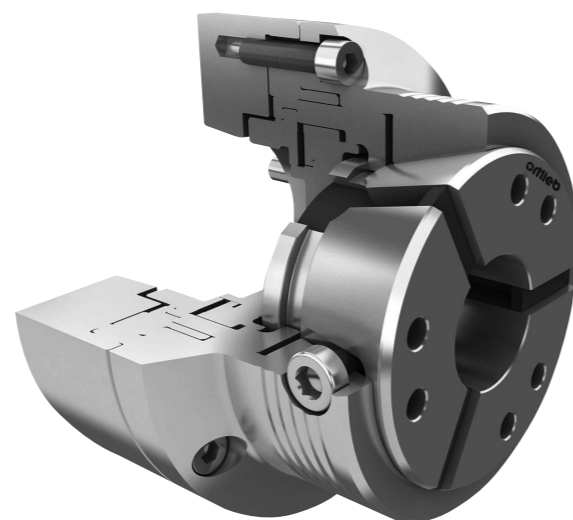
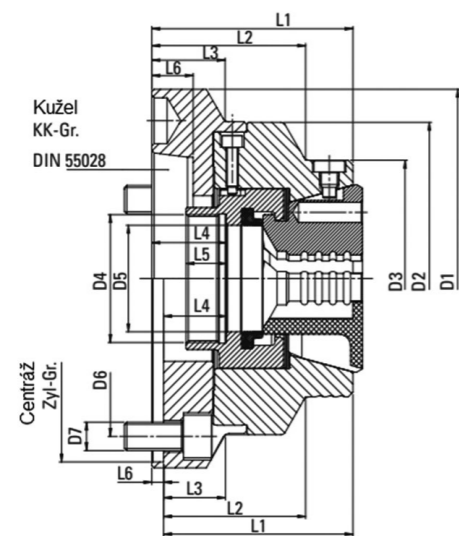


SPANNAX through hole chuck SlimLine ORTLIEB

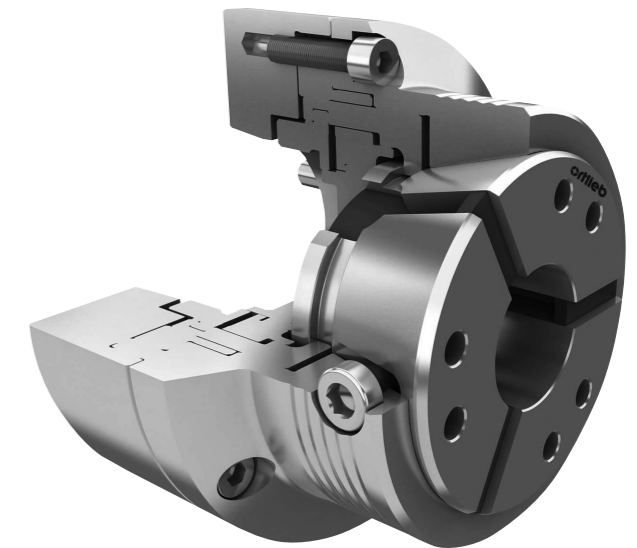
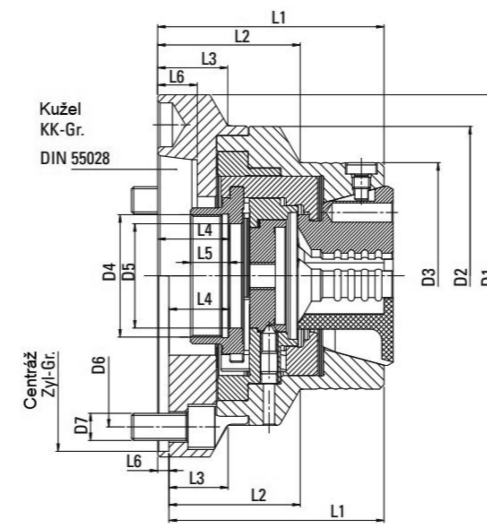


Type	Designation	Size	Spindle end	D1 mm	D2 mm	D3 mm	D4 mm	D5 mm	D6 mm	L1 mm	L2 mm	L3 mm	L4 mm	L5 mm	Weight kg	Max. RPM (min ⁻¹)
TSL42/5D	036.8101/00	42	A2-5	130	95	M66 x 1,5	45	104,8	M10 (4x90°)	85	20	34,5	15	16,5	3,2	8000
TSL42/6D	036.8102/00	42	A2-6	160	95	M66 x 1,5	45	133,4	M12 (4x90°)	85	20	34,5	15	17,5	4,8	8000
TSL42/140D	036.8103/00	42	Z140	150	95	M66 x 1,5	45	104,8	M10 (3x120°)	70	55	15	15	5	3,4	8000
TSL52/5D	036.8104/00	52	A2-5	130	95	M66 x 1,5	55	104,8	M10 (4x90°)	89	20	34,5	15	16,5	3,1	8000
TSL52/6D	036.8105/00	52	A2-6	160	95	M66 x 1,5	55	133,4	M12 (4x90°)	89	30	34,5	15	17,5	4,7	8000
TSL52/140D	036.8106/00	52	Z140	150	95	M66 x 1,5	55	104,8	M10 (3x120°)	74	17	15	15	5	3,3	8000
TSL65/6D	036.8107/00	65	A2-6	160	113	M90 x 1,5	70	133,4	M10 (4x90°)	95	25	34	15	17,5	4,7	8000
TSL65/8D	036.8108/00	65	A2-8	202	113	M90 x 1,5	70	171,4	M16 (4x90°)	100	35	39	15	20	7,7	8000
TSL65/170D	036.8109/00	65	Z170	180	113	M90 x 1,5	70	133,4	M12 (6x60°)	80	20	19	15	5	5	8000
TSL80/8D	036.8110/00	80	A2-8	202	130	M102 x 1,5	85	171,4	M16 (6x60°)	100	35	39	15	20	4,6	7000

SPANNAX through hole chuck ORTLIEB



SPANNAX enstop chuck ORTLIEB

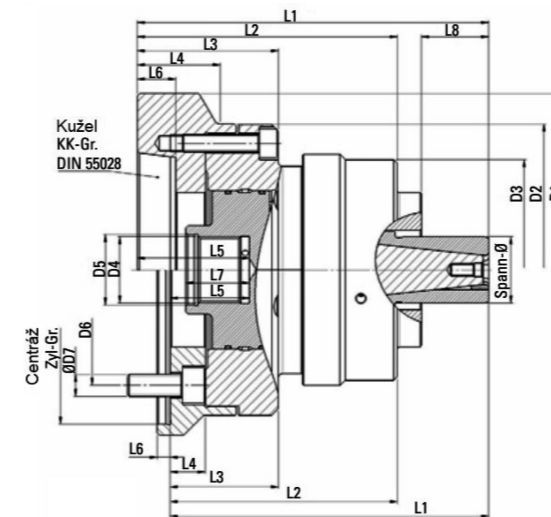
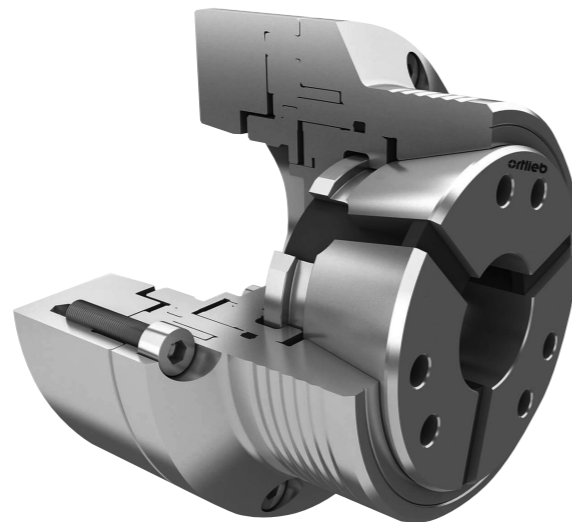
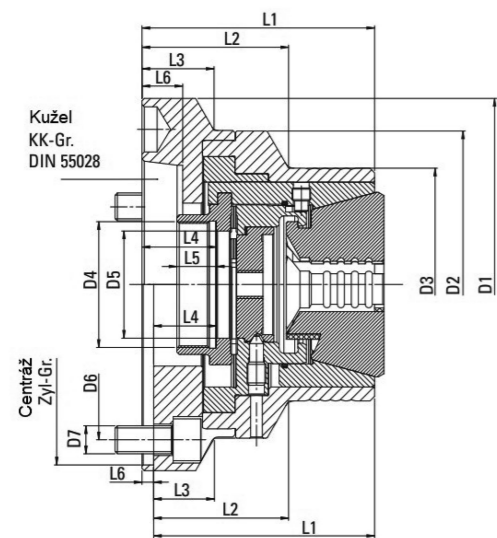


Type	Designation	Size	Spindle end	D1 mm	D2 mm	D3 mm	D4 mm	D5 mm	D6 mm	D7 mm	L1 mm	L2 mm	L3 mm	L4 mm	L5 mm	L6 mm	Max. RPM (min ⁻¹)
TS42/5D	036.8010/00	42	A2-5	132	-	100	M54 x 1,5	45	104,8	M10 (4x90°)	90	70	-	36,5	17	16,5	7000
TS42/6D	036.8011/00	42	A2-6	160	132	100	M54 x 1,5	45	133,4	M12 (4x90°)	90	70	36	36,5	17	17,5	7000
TS42/140D	036.8012/00	42	Z140	150	132	100	M54 x 1,5	45	104,8	M10 (4x90°)	75	55	15	21,5	17	6	7000
TS65/5D	036.8020/00	65	A2-5	157	-	122	M78 x 1,5	68,5	104,8	M10 (4x90°)	100	70	-	39	17,5	19	6000
TS60/6D	036.8021/00	65	A2-6	157	-	122	M78 x 1,5	68,5	133,4	M12 (4x90°)	98	68	-	37	17,5	17,5	6000
TS65/8D	036.8022/00	65	A2-8	202	157	122	M78 x 1,5	68,5	171,4	M16 (4x90°)	102	72	47	41	17,5	20	6000
TS65/140D	036.8023/00	65	Z140	157	-	122	M78 x 1,5	68,5	104,8	M10 (4x90°)	100	70	-	39	17,5	5	6000
TS65/170D	036.8024/00	65	Z170	180	157	122	M78 x 1,5	68,5	133,4	M12 (4x90°)	9+8	68	13	37	17,5	5	6000
TS100/170D	036.9028/00	100	Z170	215	-	180	M95 x 1,5	87	133,4	M12 (4x60°)	110	89	-	31	25	6	5000
TS100/220D	036.9029/00	100	Z220	230	215	180	M95 x 1,5	87	171,4	M16 (4x60°)	110	89	31,5	31	25	6	5000

Type	Designation	Size	Spindle end	D1 mm	D2 mm	D3 mm	D4 mm	D5 mm	D6 mm	D7 mm	L1 mm	L2 mm	L3 mm	L4 mm	L5 mm	L6 mm	Max. RPM (min ⁻¹)
TS42/5A	036.8030/00	42	A2-5	132	-	100	M54 x 1,5	46	104,8	M10 (4x90°)	105	68	-	36,5	17	16,5	7000
TS42/6A	036.8031/00	42	A2-6	160	132	100	M54 x 1,5	46	133,4	M12 (4x90°)	105	68	36	36,5	17	17,5	7000
TS42/140A	036.8032/00	42	Z140	150	132	100	M54 x 1,5	46	104,8	M10 (4x90°)	90	53	15	21,5	17	6	7000
TS65/5A	036.8040/00	65	A2-5	157	-	122	M78 x 1,5	68	104,8	M10 (4x90°)	112	69	-	39	17,5	19	6000
TS60/6A	036.8041/00	65	A2-6	157	-	122	M78 x 1,5	68	133,4	M12 (4x90°)	110	67	-	37	17,5	17,5	6000
TS65/8A	036.8042/00	65	A2-8	202	157	122	M78 x 1,5	68	171,4	M16 (4x90°)	114	71	47	41	17,5	20	6000
TS65/140A	036.8043/00	65	Z140	157	-	122	M78 x 1,5	68	104,8	M10 (4x90°)	112	69	-	39	17,5	5	6000
TS65/170A	036.8044/00	65	Z170	180	157	122	M78 x 1,5	68	133,4	M12 (4x90°)	110	67	13	37	17,5	5	6000
TS100/170A	036.9034/00	100	Z170	215	-	180	M95 x 2,0	87	133,4	M12 (6x60°)	159	138	-	31	25	6	3800
TS100/220A	036.9035/00	100	Z220	230	215	180	M95 x 2,0	87	171,4	M16 (6x60°)	159	138	31	31	25	6	3800

SPANNAX DL for position neutral clamping ORTLIEB

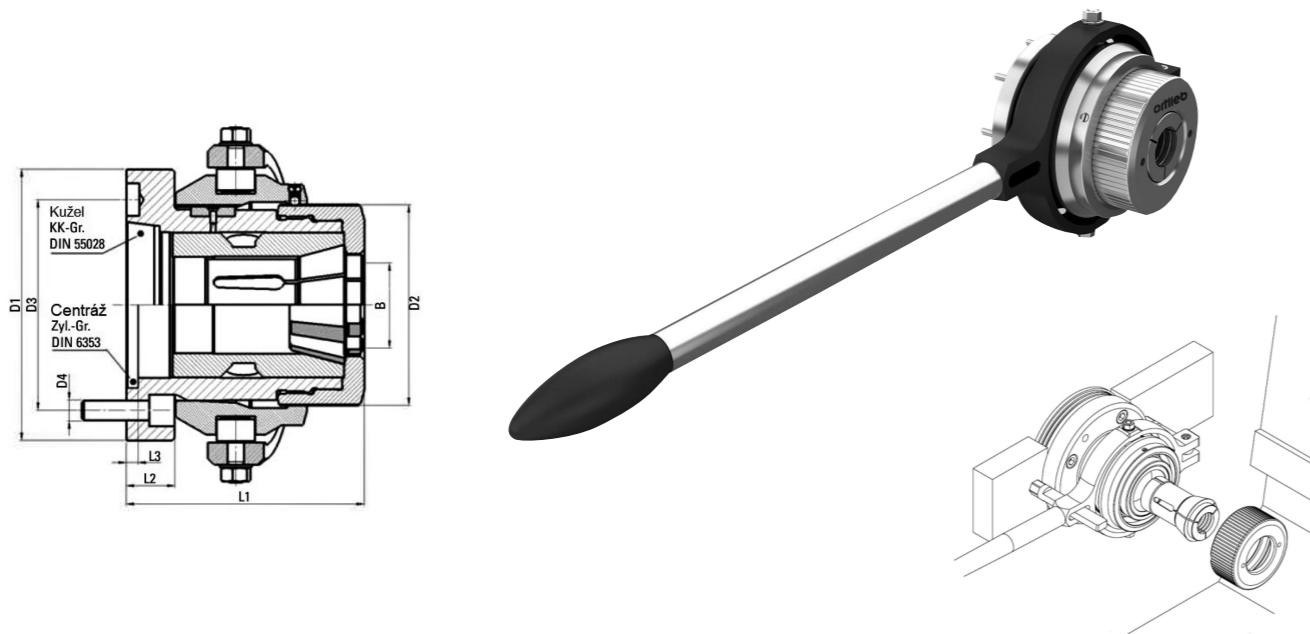
CenterGrip expanding mandrel ORTLIEB



Type	Designation	Size	Spindle end	D1 mm	D2 mm	D3 mm	D4 mm	D5 mm	D6 mm	D7 mm	L1 mm	L2 mm	L3 mm	L4 mm	L5 mm	L6 mm	Max. RPM (min ⁻¹)
TS32/4DL	036.9625/00	32	A2-4	105	100	75,5	M40 x 1,5	33	82,6	M10 (3x120°)	100,8	65,8	50	34,5	15	14,5	8000
TS32/5DL	036.9626/00	32	A2-5	130	100	75,5	M40 x 1,5	33	104,8	M10 (3x120°)	100,8	65,8	26	34,5	15	16,5	8000
TS32/120DL	036.9627/00	32	Z120	130	100	75,5	M40 x 1,5	33	102	M8 (6x60°)	83	49	15	17	15	6	8000
TS42/5DL	036.9061/00	42	A2-5	132	-	100	M54 x 1,5	46	104,8	M10 (4x90°)	105	68	-	37	17	16,5	7000
TS42/6DL	036.9062/00	42	A2-6	160	132	100	M54 x 1,5	46	133,4	M12 (4x90°)	105	68	36	37	17	17,5	7000
TS42/140DL	036.9069/00	42	Z140	150	132	100	M54 x 1,5	46	104,8	M10 (4x90°)	90	53	15	22	17	6	7000
TS65/5DL	036.9063/00	65	A2-5	157	-	122	M78 x 1,5	68	104,8	M10 (4x90°)	112	69	-	39,5	17,5	19	6000
TS65/6DL	036.9070/00	65	A2-6	157	-	122	M78 x 1,5	68	133,4	M12 (4x90°)	110	67	-	37,5	17,5	17,5	6000
TS65/85DL	036.9065/00	65	A2-8	202	157	122	M78 x 1,5	68	171,4	M16 (4x90°)	114	71	47	41,5	17,5	20	6000
TS65/140DL	036.9611/00	65	Z140	157	-	122	M78 x 1,5	68	104,8	M10 (4x90°)	112	69	-	39,5	17,5	5	6000
TS65/170DL	036.9612/00	65	Z170	180	157	122	M78 x 1,5	68	133,4	M12 (4x90°)	110	67	13	37,5	17,5	5	6000

Type	Designation	Clamping range	Spindle end	D1 mm	D2 mm	D3 mm	D4 mm	D5 mm	D6 mm	D7 mm	L1 mm	L2 mm	L3 mm	L4 mm	L5 mm	L6 mm	L7 mm	L8 max. mm	Max. RPM (min ⁻¹)
CG30/5	057.1102/00	18 - 35	A2-5	132	132	82	M30 x 1,5	32	104,8	M10 (4x90°)	136,5	113,5	61	-	51	16,5	30	23	5000
CG30/6	057.1103/00	18 - 35	A2-6	160	132	82	M30 x 1,5	32	133,4	M12 (4x90°)	136,5	113,5	61	36	51	17,5	30	23	5000
CG30/140	057.1104/00	18 - 35	Z140	150	132	82	M30 x 1,5	32	104,8	M10 (4x90°)	121,5	98,5	46	15	36	6	30	23	5000
CG50/5	057.1202/00	30 - 55	A2-5	132	132	100	M30 x 1,5	32	104,8	M10 (4x90°)	159,5	118	64	-	51	16,5	29	41,5	5000
CG50/6	057.1203/00	30 - 55	A2-6	160	132	100	M30 x 1,5	32	133,4	M12 (4x90°)	159,5	118	64	36	51	17,5	29	41,5	5000
CG50/140	057.1204/00	30 - 55	Z140	150	132	100	M30 x 1,5	32	104,8	M10 (4x90°)	144,5	103	49	15	36	6	29	41,5	5000
CG80/5	057.1302/00	45 - 80	A2-5	132	132	114	M30 x 1,5	32	104,8	M10 (4x90°)	174,5	123	75	-	47	16,5	25	51,5	5000
CG80/6	057.1303/00	45 - 80	A2-6	160	132	114	M30 x 1,5	32	133,4	M12 (4x90°)	174,5	123	75	36	47	17,5	25	51,5	5000
CG80/8	057.1305/00	45 - 80	A2-8	202	132	114	M30 x 1,5	32	171,4	M16 (4x90°)	176,5	126	77	47	49	20	25	51,5	5000
CG80/140	057.1304/00	45 - 80	Z140	150	132	114	M30 x 1,5	32	104,8	M10 (4x90°)	159,5	108	60	15	32	6	25	51,5	5000
CG80/170	057.1306/00	45 - 80	Z170	180	132	114	M30 x 1,5	32	133,4	M12 (4x90°)	159,5	108	60	30	32	6	25	51,5	5000

Lever operated chuck SSF ORTLIEB



Type	Clamping range	Spindle end (Z)	Rubber-Flex type	Collet type	D1 mm	D2 mm	D3 mm	D4 mm	L1 mm	L2 mm	L3 mm	L4 mm	Max. RPM (min ⁻¹)
SSF 16 Z	1 – 16	Z 42	RFC 12	140 E	69	52	57	4 x M5	69,5	9	4	270	5000
SSF 20 Z	2 – 24	Z 54	RFC 18	148 E	88	66	74	6 x M6	90	11	4	336	5000
SSD 30/5	2 – 30	A2-5	RFC 24	163 E	135	82	104,8	4 x M10	115,2	25	-	406	4000
SSF 30 Z	2 – 30	Z 72	RFC 24	163 E	105	82	90	6 x M6	103	12	4	406	4000
SSF 40/5	3 – 42	A2-5	RFC 36	173 E	135	100	104,8	4 x M10	119	24	-	477	4000
SSF 40/6	3 – 42	A2-6	RFC 36	173 E	170	100	133,4	4 x M12	122	27	-	477	4000
SSF 40 Z	3 – 42	Z88	RFC 36	173 E	122	100	107	8 x M6	107	12	4	477	4000
SSF 60/6	4 – 60	A2-6	RFC 52	185 E	170	120	133,4	4 x M12	140,2	27	-	550	3000
SSF 60/8	4 – 60	A2-8	RFC 52	185 E	220	120	171,4	4 x M16	143	30	-	550	3000
SSF 60 Z	4 – 60	Z115	RFC 52	185 E	150	120	131	8 x M8	127	14	4	550	3000
SSF 80 Z	20 – 80	Z130	-	193 E	178	149	158	8 x M8	151	15	5	577	2500

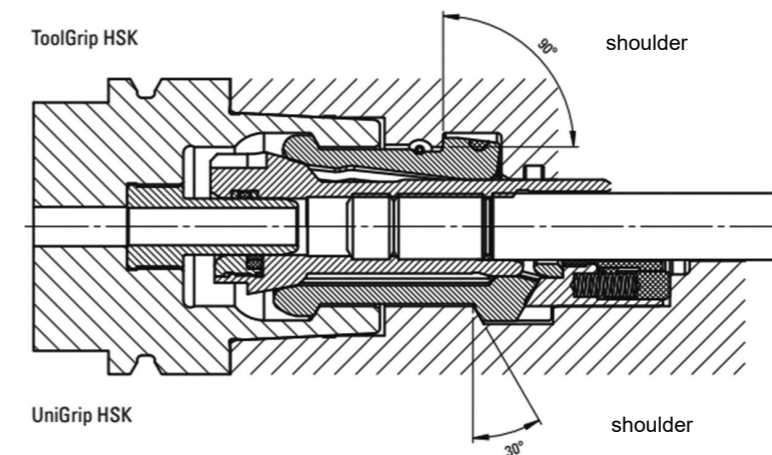
The Tool Gripper for Hollow Taper Shank Interface

The Ortlieb HSK-tool grippers are the basis for safe and reliable clamping of HSK-tools. For the first time it is possible to offer maintenance-free tool grippers by the use of ceramic on the functional surfaces in connection with a wear-resistant hard coating. After a one-time initial lubrication the tool gripper is clamping up to 5 mio. cycles without losing any clamping force.

The permitted clamping force is up to 200 % (HSK A50) higher than the by the standard DIN 69893/69063 recommended clamping force. This ensures a safe tool clamping also at high load and high rotation speed.

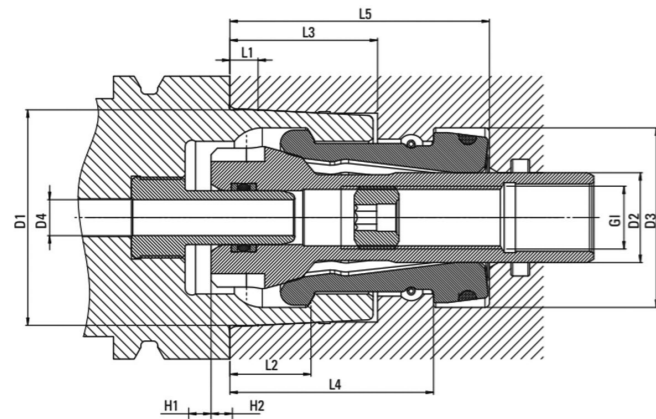
Intelligent designed mounting fixtures are assuring shortest mounting or changing time for the tool grippers. The Ortlieb HSK-tool grippers are available in two product lines: the ToolGrip HSK and UniGrip HSK. Specially the ToolGrip HSK is convincing by compact dimensions, a simple and maintenance-friendly design and a large coolant passage (HSK A63 up to Ø 14 mm).

1. TGC48-08: ceramic ring + Maxit-WCH mod coating, maintenance-free
2. TGB48-06: Maxit-WCH mod coating, maintenance-free
3. TG48-06: standard steel design, maintenance acc. lubrication chart



ToolGrip HSK

The ToolGrip HSK tool gripper are specially designed for HSC machining and heavy milling machining. They allow much higher clamping force than the recommended clamping force acc. to standard DIN 69893. These tool grippers convince with their short length, the simple service friendly design, the large coolant passage and the high clamping force. The vulcanised six-piece clamping segments are rated for a life time of 2 mio. load alternations.



Type	Designation	D1 mm	D2 mm	D3 mm	D4 mm	GI	L1 mm	L2 mm	L3 mm	L4 mm	L5 mm	H1 mm	H2 mm	Fz max kN	Fsp. max. kN
A25/B32	TG 19-06	19	6,2	17	3	M4 x 0,5	2,5	7,21	13,5	18	24	4,6	2,5	1,5	4,5
A32/B40	TG 24-06	24	9	20,5	4,2	M6	3,2	8,92	16,5	22,9	29,1	4,7	2,5	2	6
A40/B50	TG 30-06	30	12	25	5	M8	4	11,42	20,5	28,5	36,5	5,7	2,5	4	12
A50/B63	TG 38-06	38	14	32	6,8	M10 x 1,0	5	14,13	25,5	35,6	45,5	6	2,5	8	24
A63/B80	TG 48-06	48	20	40	8,4	M14 x 1,5	6,3	18,13	33	45,5	58	6	2,5	10	30
A80/B100	TG 60-06	60	23	50	10,2	M16 x 1,5	8	22,85	41	57,1	73	6,9	2,5	15	45
A100/B125	TG 75-06	75	28,5	63	12	M20 x 1,5	10	28,56	51	71	91	7,6	3	24	60
A125/B160	TG 95-06	95	38	80	14	M27 x 1,5	12,5	36,27	64	89	114	10	3	35	105
A160	TG 120-06	120	45	100	16	M30 x 1,5	16	45,98	81	113	145	10,5	3,5	45	135

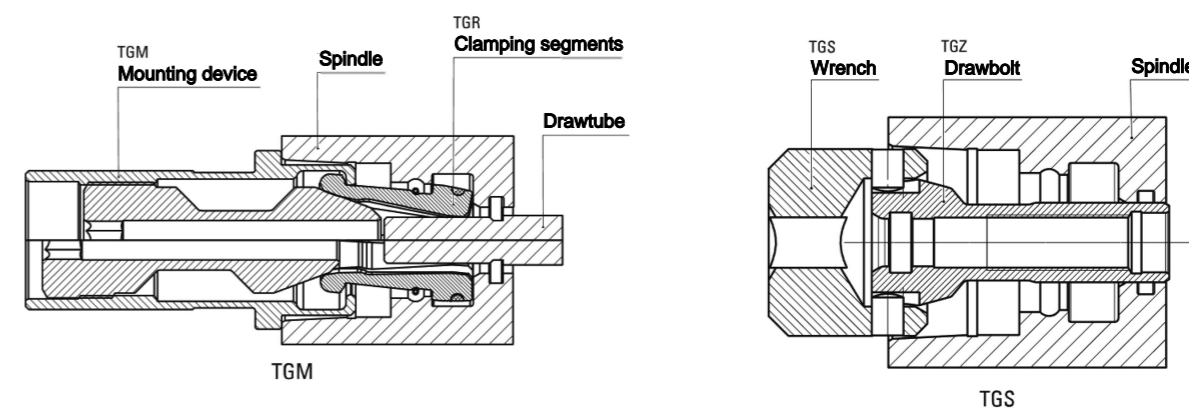
ToolGrip HSK with ceramic

We recommend the ToolGrip HSK tool gripper with ceramic for maintenance-free operation at highest load. After a one-time initial lubrication the tool gripper is clamping up to 5 mio. cycles without losing any clamping force.

Size	Designation	D1 mm	D2 mm	D3 mm	D4 mm	GI	L1 mm	L2 mm	L3 mm	L4 mm	L5 mm	H1 mm	H2 mm	Fz max kN	Fsp. max. kN
A50/B63	TGC 38-06	38	14	32	6,8	M10 x 1,0	5	14,13	25,5	35,6	45,5	6	2,5	8	24
A63/B80	TGC 48-16	48	20	40	8,4	M14 x 1,5	6,3	18,13	33	45,56	58	6	2,5	10	30
A100/B125	TGC 75-06	75	28,5	63	12	M20 x 1,5	10	28,56	51	71	91	7,6	3	20	60

Mounting of Tool Gripper ToolGrip HSK

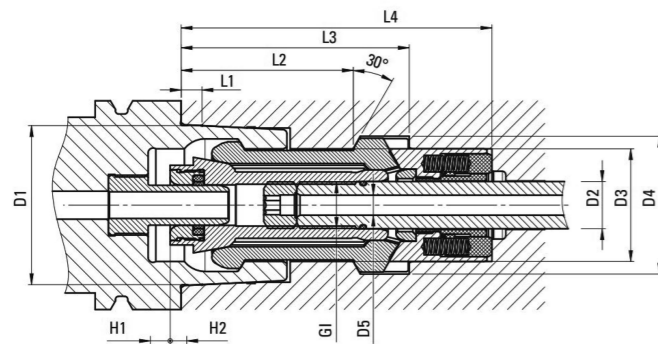
There are two different tools needed in order to mount the ToolGrip HSK grippers: The mounting fixture TGM is used in order to mount the vulcanised clamping segments TGR in the spindle. This fixture is clamping the clamping segments so that they can easily be inserted in the motor spindle. The socket wrench TGS is used in order to mount the pull stud. This wrench is needed in order to generate the necessary torque for countering the stud. Please note that special mounting fixtures are needed for each size. Please ask for our mounting instructions.



HSK-Size	Tool gripper	Mounting fixture	Socket wrench
A25/B32	TG 19	TGM 19	-
A32/B40	TG 24	TGM 24	TGS 24
A40/B50	TG 30	TGM 30	TGS 30
A50/B63	TG 38	TGM 38	TGS 38
A63/B80	TG 48	TGM 48	TGS 48
A80/B100	TG 60	TGM 60	TGS 60
A100/B125	TG 75	TGM 75	TGS 75
A125/B160	TG 95	TGM 95	TGS 95
A160	TG 120	TGM 120	TGS 120

UniGrip HSK

The UniGrip HSK tool-gripper is consisting of a pull stud, 8 single clamping segments and a reset- spring which holds the clamping segments in position. This tool-gripper allows highest rotation speed up to 40.000 min⁻¹ and this with increasing high clamping force. Of course that tool-gripper is also available in wear-resistant coated design as well as in ceramic or holding design available.



Size	Designation	D1 mm	D2 mm	D3 mm	D4 mm	D5 mm	GI	L1 mm	L2 mm	L3 mm	L4 mm	H1 mm	H2 mm	Fz max kN	Fsp. max. kN	Fh. max. N	Modification
A63/B80	WG 48-03	48	14,6	34	41,6	6	M14 x 1,5	6,3	52	69	94	7	3	10	30	-	Standart
	WGB 48	48	14,6	34	41,6	6	M14 x 1,5	6,3	52	69	94	7	3	10	30	-	Coated
	WGC 48-07	48	14,6	34	41,6	6	M14 x 1,5	6,3	52	69	94	7	3	10	30	-	Ceramic
	WGB 48-21	48	14,6	34	41,6	6	M14 x 1,5	6,3	52	69	94	7	3	10	30	300	Holding

ToolGrip SK

The ToolGrip SK tool gripper are an approved serial product for automatic tool changing. They are clamping tools with ISO taper and pull stud acc. DIN 69871/72. The six-piece clamping segments have an optimal load balancing. Therefore a higher permitted clamping force is possible. And this at faster cycles. On request all tool grippers are available in wear-resistant coated design. Please contact us!

Possible modifications:

- Reinforced design for higher clamping forces
- Design with varying clamping stroke
- Design with additional sealings
- Design with air blast / coolant / minimal quantity lubrication delivery

Size	Designation	D1 mm	D2 mm	D3 mm	D4 mm	D5 mm	GA	GI	L1 mm	L2 mm	L3 mm	Fsp kN	H mm
SK30	BSK 2557-03 BSK 2557-02	31,75	19	24	13	3	M10	M10 x 1,0	47,8	56	59,4 74,6	9 5	5 6,5
SK40	BSK 2602-03 BSK 2605	44,45	27	35	19	6	M16 x 1,5	M16 x 1,0	68,4	85	60,6 81,6	20	6
SK45	BSK 2425-01 BSK 2425-02	57,15	34	41	23	6	M20 x 1,5	M20 x 1,5	82,7	101,5	93,2 117	25	6
SK50	BSK 2528 BSK 2528-02	69,85	41	50	28	8	M24 x 1,5	M24 x 1,5	101,75	123,2 124,2	75,5 117,2	35 35	8 6
SK60	BSK 2604 BSK 2604-12	107,95	62	74	40	10	M32 x 1,5	M30 x 1,5	161,8	188	93,2 148,2	60	8



MultiGrip SK

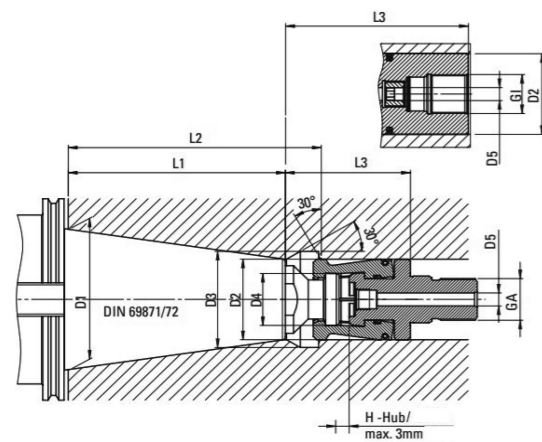
The MultiGrip SK tool gripper are clamping tools with ISO taper tools and pull stud acc. DIN 69871/72. It is possible to use tools with other pull studs with same connection dimensions in the same spindle internal contour by simply changing the tool gripper. Following pull studs are possible:

Following pull studs are possible:

- DIN 69871/72
- ISO 7388/1+2 (A/B)
- ANSI B5.50
- MAS-BT JIS B6339-1992

Possible modifications:

- Reinforced design for higher clamping forces
- Design with varying clamping stroke
- Design with additional sealings
- Design with air blast /coolant/ minimal quantity lubrication delivery



Size	Designation	D1 mm	D2 mm	D3 mm	D4 mm	D5 mm	GA	GI	L1 mm	L2 mm	L3 mm	Fsp kN	H mm
SK30	BSK 2557-11 BSK 2557-16	31,75	19	24	13	3	M10	M10	47,8	56	47,6 72,2	9	4
SK40	BSK 2537-06 BSK 2537	44,45	27	35	19	6	M16 x 1,5	M24 x 1,5	68,4	76,5	60,6 130,6	20 15	5,5 6
SK45	BSK 2543-04 BSK 2543-03	57,15	34	41	23	6,8	M20 x 1,5	M20 x 1,5	82,7	94,9	85 112,5	25	6
SK50	BSK 2615-02 BSK 2494	69,85	43 41	50	28	6,5	M24 x 1,5	M24 x 1,5	101,75	114,5 116,5	75,75 128,25	35	6 8

UniGrip SK

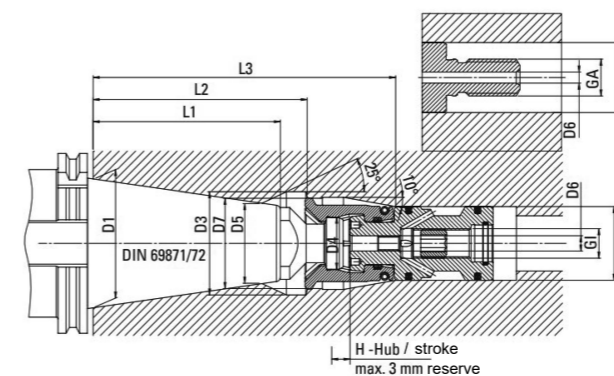
The UniGrip SK tool gripper are an approved serial product for automatic tool changing. They are clamping tools with ISO taper and pull stud acc. DIN 69871/72. The six-piece clamping segments have an optimal load balancing. Therefore a higher permitted clamping force is possible. And this at faster cycles.

Following pull studs are possible:

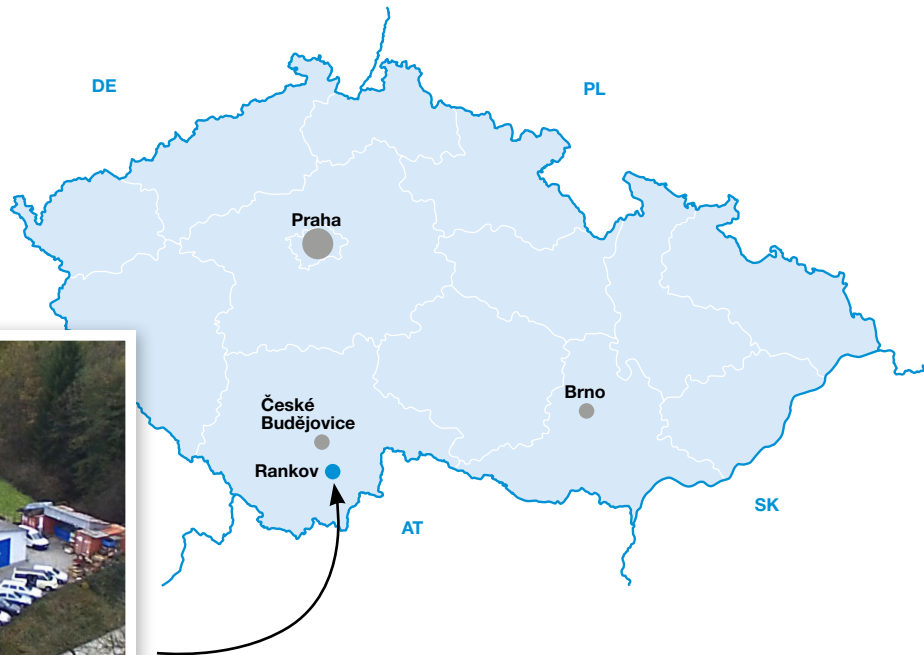
- DIN 69871/72
- ISO 7388/1+2 (A/B)
- ANSI B5.50
- MAS-BT JIS B6339-1992

Possible modifications:

- Reinforced design for higher clamping forces
- Design with varying clamping stroke
- Design with additional sealings
- Design with air blast / coolant / minimal quantity lubrication delivery



Size	Designation	D1 mm	D2 mm	D3 mm	D4 mm	D5 mm	D6 mm	D7 mm	GA	GI	L1 mm	L2 mm	L3 mm	Fsp kN	H mm
SK30	BSK 2557-15	31,75	19	27	13	19,5	3	22,5	M10	-	47,8	59	76	9	6
SK40	BSK 2651-18 BSK 2651-01	44,45	27	40	19	27,6	5	34	M16 x 1,5	M16 x 1,5	68,4	79,5	113	20	6,5
SK50	BSK 2666-02 BSK 2666-10	69,85	40	56	28	43	7	49	M24 x 1,5	M16 x 1,5	101,75	116,5	166 163,7	30 35	6,5 5



KORAN

- ✓ precise CNC machining
- ✓ production and sale of collets, clamping heads and collet chucks
- ✓ custom production

Koran, spol. s.r.o.

Rankov 15
374 01 Trhové Sviny
Czech republic
email: pdusakova@koran-rankov.cz

www.koran-rankov.cz

MRG - CZ

- ✓ sale of CNC machines
- ✓ service of CNC machines
- ✓ barfeeders

MRG CZ s.r.o.

Rankov 15
374 01 Trhové Sviny
Czech republic
email: pdusakova@koran-rankov.cz

www.mrg-cz.cz