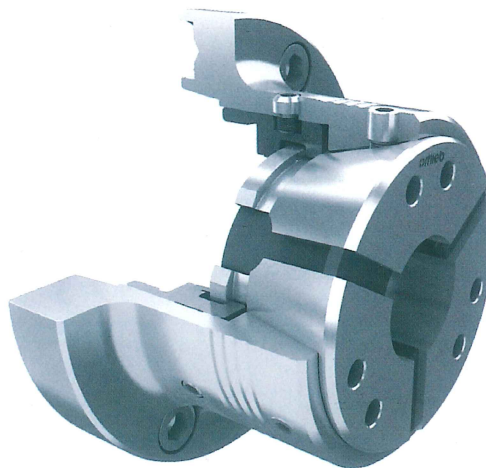
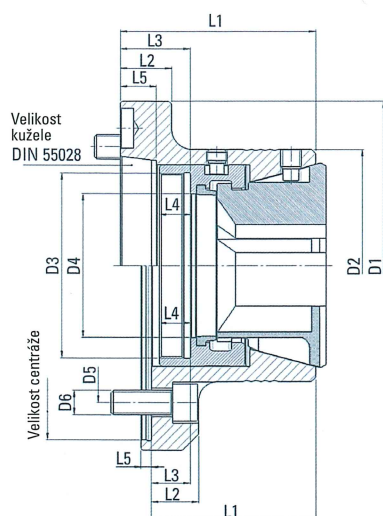
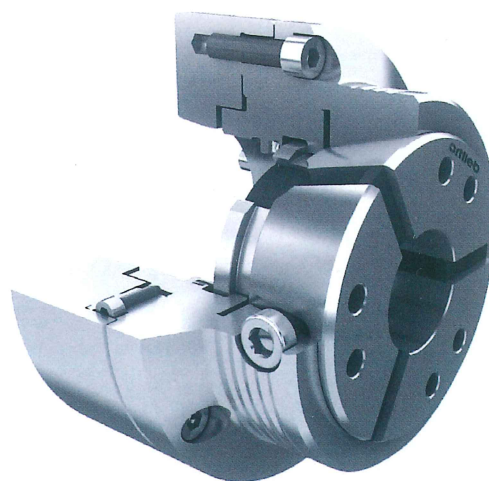
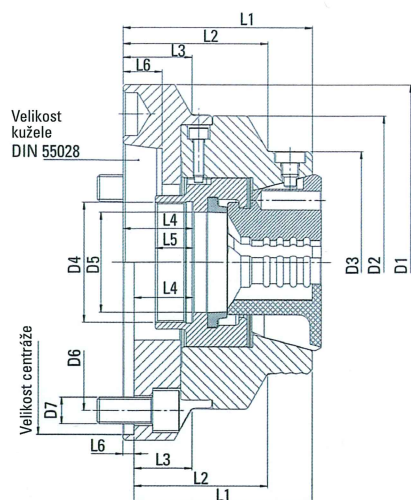


## 2.2. SPANNAX upínač SlimLine průchozí



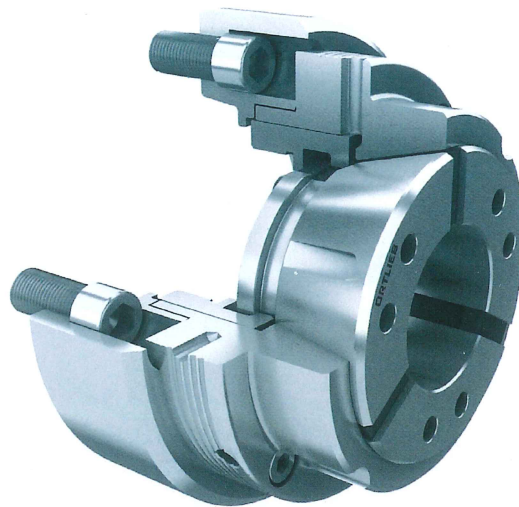
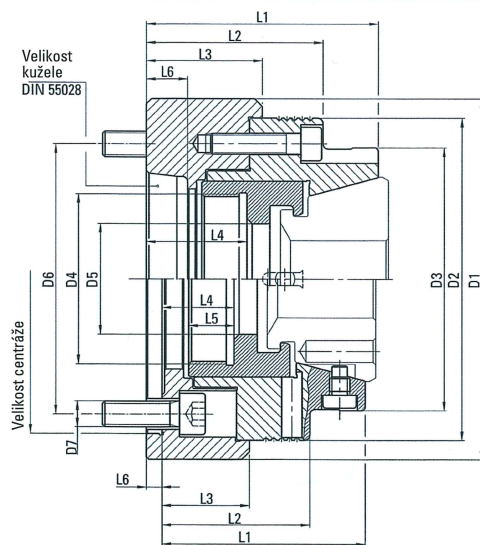
Typ	Označení	Velikost kleštiny	Velikost Kužele/ Velikost centráže	D1 mm	D2 mm	D3 mm	D4 mm	D5 mm	D6 mm	L1 mm	L2 mm	L3 mm	L4 mm	L5 mm	Váha kg	Vyváženost max. (min <sup>-1</sup> )
TSL42/5D	036.8101/00	42	A2-5	130	95	M66x1,5	45	105	M10 (4x90°)	85	20	34,5	15	16,5	3,2	8000
TSL42/6D	036.8102/00	42	A2-6	160	95	M66x1,5	45	133	M12 (4x90°)	85	20	34,5	15	17,5	4,8	8000
TSL42/140D	036.8103/00	42	140	150	95	M66x1,5	45	105	M10 (3x120°)	70	55	15	15	5	3,4	8000
TSL52/5D	036.8104/00	52	A2-5	130	95	M66x1,5	55	105	M10 (4x90°)	89	20	34,5	15	16,5	3,1	8000
TSL52/6D	036.8105/00	52	A2-6	160	95	M66x1,5	55	133	M12 (4x90°)	89	30	34,5	15	17,5	4,7	8000
TSL52/140D	036.8106/00	52	140	150	95	M66x1,5	55	105	M10 (3x120°)	74	17	15	15	5	3,3	8000
TSL65/6D	036.8107/00	65	A2-6	160	113	M90x1,5	70	133	M12 (4x90°)	95	25	34	15	17,5	4,7	8000
TSL65/8D	036.8108/00	65	A2-8	202	113	M90x1,5	70	171	M16 (4x90°)	100	35	39	15	20	7,7	8000
TSL65/170D	036.8109/00	65	170	180	113	M90x1,5	70	133	M12 (6x60°)	80	20	19	15	5	5,0	8000
TSL80/8D	036.8110/00	80	A2-8	202	130	M102x1,5	85	171	M16 (6x60°)	100	35	39	15	20	4,6	7000

## 2.3. SPANNAX upínač průchozí ORTLIEB



Typ	Označení	Velikost kleštiny	Velikost kužele/ Velikost centráže	D1 mm	D2 mm	D3 mm	D4 mm	D5 mm	D6 mm	D7 mm	L1 mm	L2 mm	L3 mm	L4 mm	L5 mm	L6 mm	Vyváženost max. (min <sup>-1</sup> )
TS42/5D	036.8010/00	42	A2-5	132	-	100	M54x1,5	45	104,8	M10 (4x90°)	90	70	-	36,5	17	16,5	7000
TS42/6D	036.8011/00	42	A2-6	160	132	100	M54x1,5	45	133,4	M12 (4x90°)	90	70	36	36,5	17	17,5	7000
TS42/140D	036.8012/00	42	140	150	132	100	M54x1,5	45	104,8	M10 (4x90°)	75	55	15	21,5	17	6	7000
TS65/5D	036.8020/00	65	A2-5	157	-	122	M78x1,5	68,5	104,8	M10 (4x90°)	100	70	-	39	17,5	19	6000
TS65/6D	036.8021/00	65	A2-6	157	-	122	M78x1,5	68,5	133,4	M12 (4x90°)	98	68	-	37	17,5	17,5	6000
TS65/8D	036.8022/00	65	A2-8	202	157	122	M78x1,5	68,5	171,4	M16 (4x90°)	102	72	47	41	17,5	20	6000
TS65/140D	036.8023/00	65	140	157	-	122	M78x1,5	68,5	104,8	M10 (4x90°)	100	70	-	39	17,5	5	6000
TS65/170D	036.8024/00	65	170	180	157	122	M78x1,5	68,5	133,4	M12 (4x90°)	98	68	13	37	17,5	5	6000
TS100/170D	036.9028/00	100	170	215	-	180	M95x2,0	87	133,4	M12 (6x60°)	110	89	-	31	25	6	5000
TS100/220D	036.9029/00	100	220	230	215	180	M95x2,0	87	171,4	M16 (6x60°)	110	89	31,5	31	25	6	5000

## 2.4. Upínač průchozí KORAN

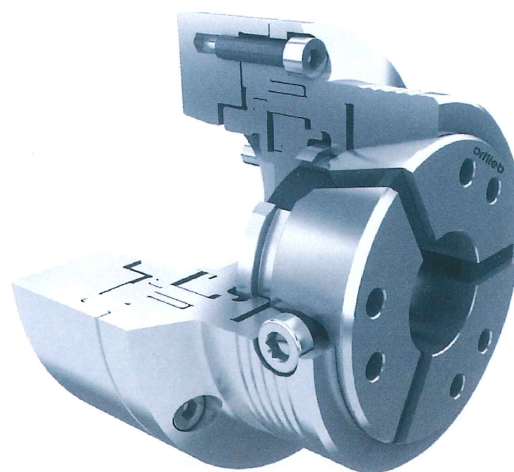
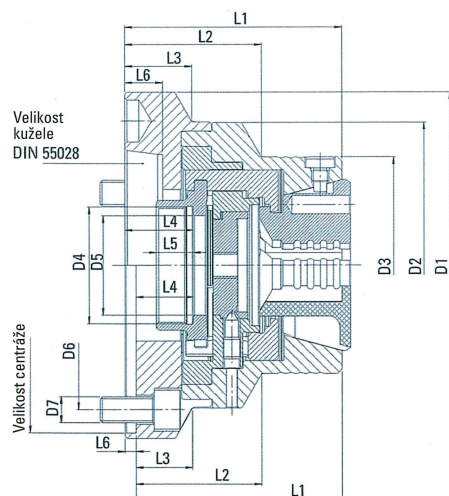


Typ	Označení	Velikost kleštiny	Velikost kužele	D1 mm	D2 mm	D3 mm	D4 mm	D5 mm	D6 mm	D7 mm	L1 mm	L2 mm	L3 mm	L4 mm	L5 mm	L6 mm	Vyváženost max. (min <sup>-1</sup> )
TS42/5D	GT42/A2-5 CZ	42	KK5	140	125	102	M66 x 1,5	43	104,8	M10 (4x90°)	90	68,5	45	39	17,5	16	5000
TS42/6D	GT42/A2-6 CZ	42	KK6	165	125	102	M66 x 1,5	43	133,4	M12 (4x90°)	90	68,5	45	39	17,5	16	5000
TS65/5D	GT65/A2-5 CZ	65	KK5	155	145	120	M78 x 1,5	67	104,8	M10 (4x90°)	95	68,5	45	39	17,5	19	4500
TS65/6D*	GT65/A2-6 CZ	65	KK6	165	145	120,3	M78 x 1,5	67	133,4	M12 (4x90°)	95	68,5	45	39	17,5	16	4500

\* možno dodávat ve volitelných délkách

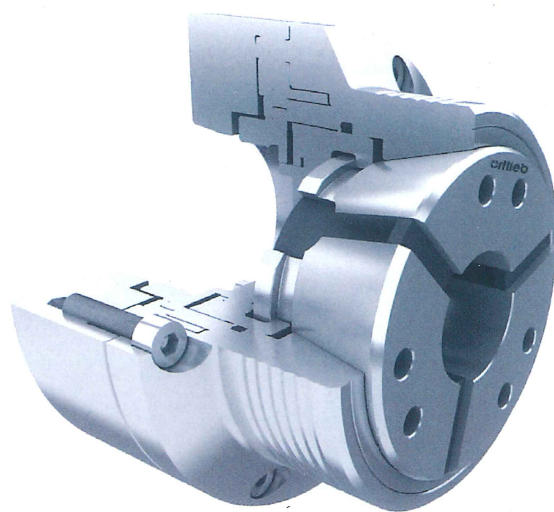
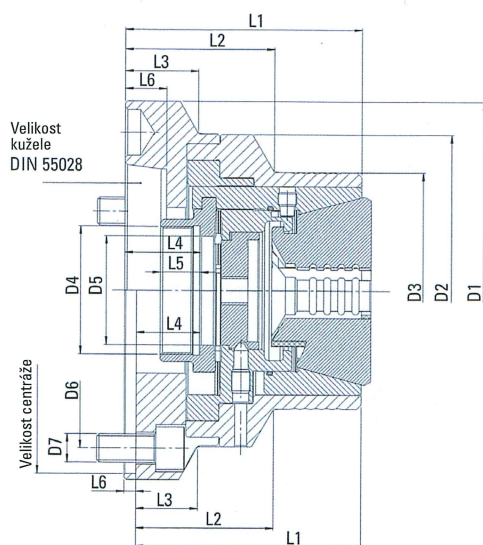


## 2.5. SPANNAX upínač s dorazem



Typ	Označení	Velikost kleštiny	Velikost kužele/ Velikost centráže	D1 mm	D2 mm	D3 mm	D4 mm	D5 mm	D6 mm	D7 mm	L1 mm	L2 mm	L3 mm	L4 mm	L5 mm	L6 mm	Vyváženost max. (min <sup>-1</sup> )
TS42/5A	036.8030/00	42	A2-5	132	-	100	M54x1,5	46	105	M10 (4x90°)	105	68	-	36,5	17	16,5	7000
TS42/6A	036.8031/00	42	A2-6	160	132	100	M54x1,5	46	133	M12 (4x90°)	105	68	36	36,5	17	17,5	7000
TS42/140A	036.8032/00	42	140	150	132	100	M54x1,5	46	105	M10 (4x90°)	90	53	15	21,5	17	6	7000
TS65/5A	036.8040/00	65	A2-5	157	-	122	M78x1,5	68	105	M10 (4x90°)	112	69	-	39	17,5	19	6000
TS65/6A	036.8041/00	65	A2-6	157	-	122	M78x1,5	68	133	M12 (4x90°)	110	67	-	37	17,5	17,5	6000
TS65/8A	036.8042/00	65	A2-8	202	157	122	M78x1,5	68	171	M16 (4x90°)	114	71	47	41	17,5	20	6000
TS65/140A	036.8043/00	65	140	157	-	122	M78x1,5	68	105	M10 (4x90°)	112	69	-	39	17,5	5	6000
TS65/170A	036.8044/00	65	170	180	157	122	M78x1,5	68	133	M12 (4x90°)	110	67	13	37	17,5	5	6000
TS100/170A	036.9034/00	100	170	215	-	180	M95x2,0	87	133	M12 (6x60°)	159	138	-	31	25	6	3800
TS100/220A	036.9035/00	100	220	230	215	180	M95x2,0	87	171	M16 (6x60°)	159	138	31	31	25	6	3800

## 2.6. SPANNAX DL upínač bez pohybu kleštiny



Typ	Označení	Velikost Kleštiny	Velikost Kužele/ Velikost centráže	D1 mm	D2 mm	D3 mm	D4 mm	D5 mm	D6 mm	D7 mm	L1 mm	L2 mm	L3 mm	L4 mm	L5 mm	L6 mm	Vyváženost max. (min <sup>-1</sup> )
TS32/4DL	036.9625/00	32	A2-4	105	100	76	M40x1,5	33	83	M10 (3x120°)	101	66	50	35	15	15	8000
TS32/5DL	036.9626/00	32	A2-5	130	100	76	M40x1,5	33	105	M10 (3x120°)	101	66	26	35	15	17	8000
TS32/120DL	036.9627/00	32	120	130	100	76	M40x1,5	33	102	M8 (6x60°)	83	49	15	17	15	6	8000
TS42/5DL	036.9061/00	42	A2-5	132	-	100	M54x1,5	46	105	M10 (4x90°)	105	68	-	37	17	17	7000
TS42/6DL	036.9062/00	42	A2-6	160	132	100	M54x1,5	46	133	M12 (4x90°)	105	68	36	37	17	18	7000
TS42/140DL	036.9069/00	42	140	150	132	100	M54x1,5	46	105	M10 (4x90°)	90	53	15	22	17	6	7000
TS65/5DL	036.9063/00	65	A2-5	157	-	122	M78x1,5	68	105	M10 (4x90°)	112	69	-	40	18	19	6000
TS65/6DL	036.9070/00	65	A2-6	157	-	122	M78x1,5	68	133	M12 (4x90°)	110	67	-	38	18	18	6000
TS65/8DL	036.9065/00	65	A2-8	202	157	122	M78x1,5	68	171	M16 (4x90°)	114	71	47	42	18	20	6000
TS65/140DL	036.9611/00	65	140	157	-	122	M78x1,5	68	105	M10 (4x90°)	112	69	-	40	18	5	6000
TS65/170DL	036.9612/00	65	170	180	157	122	M78x1,5	68	133	M12 (4x90°)	110	67	13	38	18	5	6000